

A607 Overhead service cut-out 400A and carrier

Product description:

The HJPU 400A series fused Cut-out designed with ease of use and simplicity in mind, this pole mountable fused Cut-out is the ideal method of providing rural dwellings with a safe, protected and reliable, Low Voltage power supply. Manufactured from our own track resistant grade of Glass Reinforced Polyester this fused Cut-out is unobtrusive in appearance and vandal resistant, when compared to many of the more traditional materials such as porcelain. Each fused Cut-out has fuse contacts and cable terminal plates which are manufactured from copper and bright tinned. These plates incorporate M12 captive studs with nuts and washers for the reception of cable sockets (lugs) up to 300mm² (*compression type only at 300mm²) with copper or aluminium conductors.



Product range:

| Code | Specification |
|----------------|--|
| HJPU-PM400-M12 | 400A Fused Cut-out for pole or wall mounting c/w M12 coach screw |
| HJPU-SC400-M12 | 400A Fused Cut-out for cross-arm mounting c/w M12 bolt, nut and washer |
| HJPU-SFC | Spare fuse carrier |

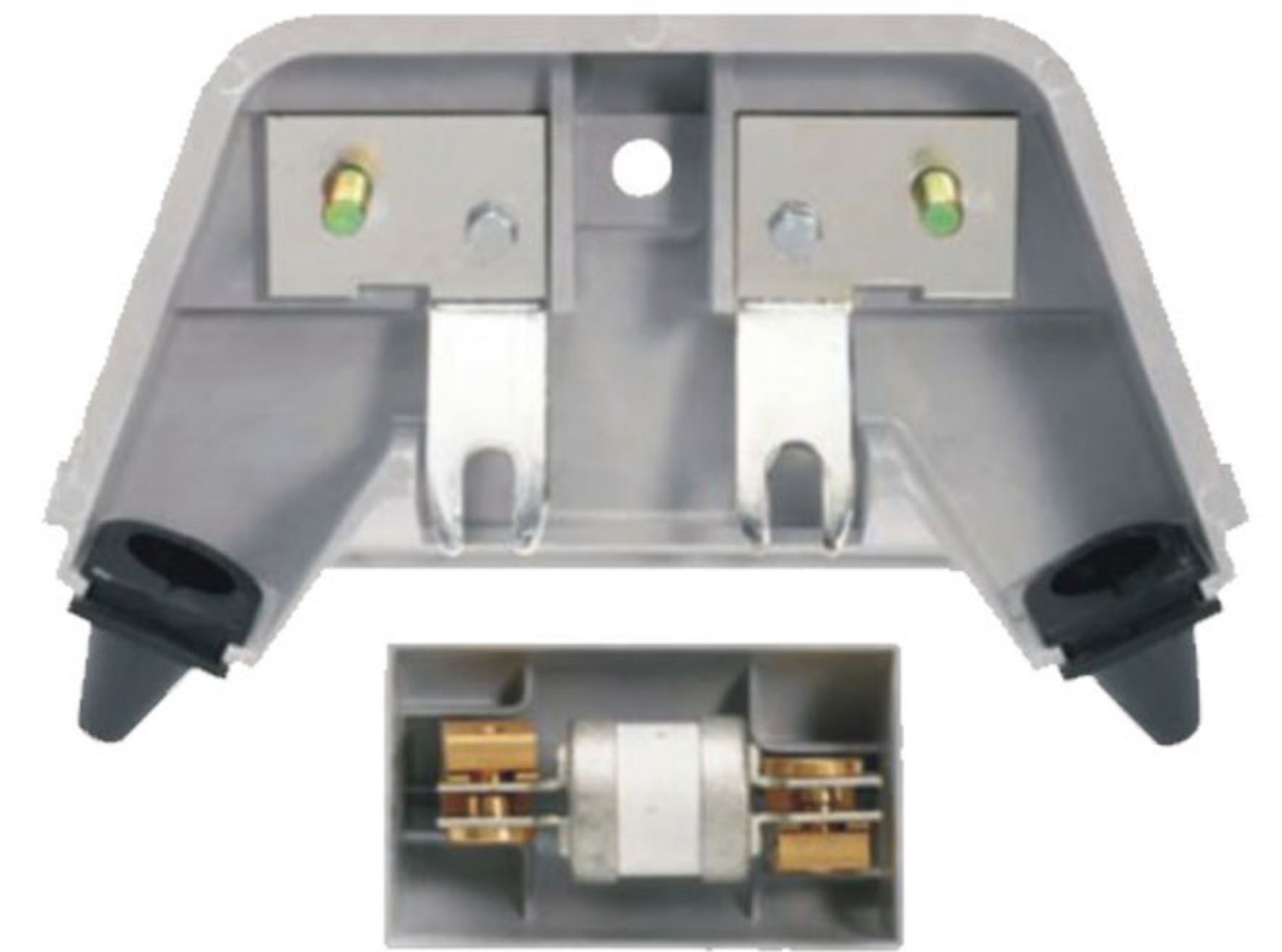
* Stepped washers recommended if lug palm has hole 16mm or greater.

This fused Cut-out is designed to accommodate standard wedge type fuselinks to BS88 Part 5: 1988.

Tested and approved for category of duty 415 AC 80.

Fixing centre requirement is 82mm.

Standard fuselink ratings range from 20 to 400A.



Fuse links for overhead service cut-out 400A

Industrial protection HRC Fuse-link J Type

Rated voltage: 415V/ 550V AC;

Rated breaking capacity: 80kA

Standard specifications: BS88-2, IEC 60269-2-1, Class: gG/Q1

| JPU Fuse link | Amp |
|---------------|---|
| JPU 82mm | 20A, 25A, 32A, 40A, 50A, 63A, 80A, 100A, 125A, 160A, 200A, 250A, 315A, 355A, 400A |

